

POP-UP BOOK CARD



Supplies:

Card Stock:	Early Espresso, Crumb Cake, Very Vanilla, Misty Moonlight, and Gold Foil Sheets
Designer Series Paper:	World of Good
Ink:	Misty Moonlight
Stamps/Dies:	Beautiful World Bundle and Tasteful Touches
Accessories/Tools:	SU Paper Trimmer, Lovely Labels Pick A Punch, 2020-2022 In-Color Enamel Dots

Cut/Score Dimensions:

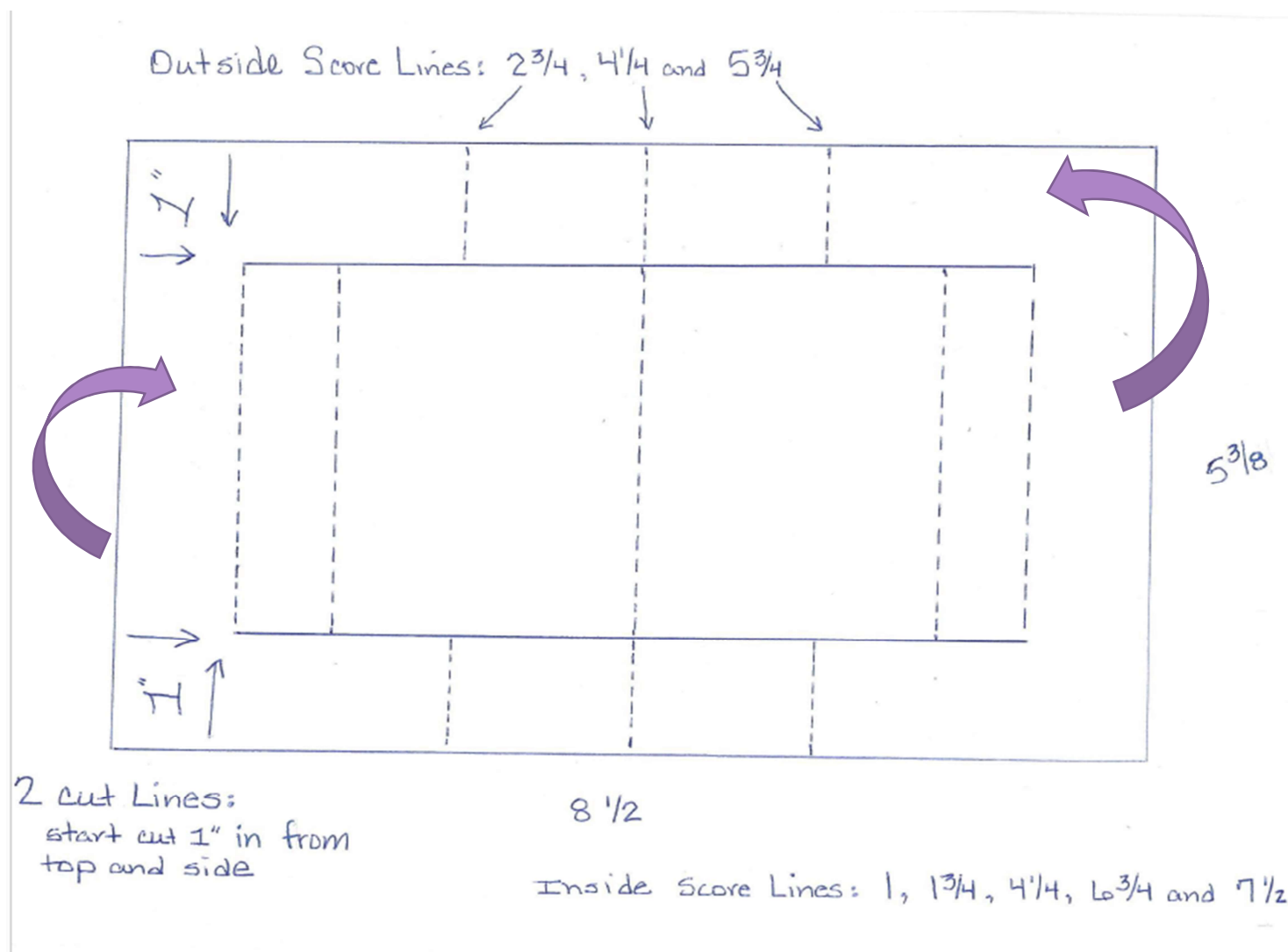
Card Base: Early Espresso cut to 8-1/2 x 5-1/2 scored at 4-1/4 on long side

Card Front Mat: Crumb Cake cut 5-3/8 x 4-1/8

Card front DSP: blue designer series paper from World of Good cut to 5-1/4 x 4

Inside DSP: (piece that will be cut & scored... see diagram below) tan inside cut 8-1/2 x 5-3/8

****YOU WILL NEED TO DO YOUR "CUT" LINES FIRST**** (this will help with the start/stop of score lines)



SOLID LINES ARE CUT LINES AND DOTTED LINES ARE SCORED

Fold each scored line, one-at-a-time. Going from left to right, each score line starts as a Valley fold (fold away from you). 2nd score line would be a Mountain fold (fold towards you).
Alternative between valley and mountain folds.

Assembly Instructions for inside DSP cut & scored piece:

Once your DSP is cut, scored and folded, my purple arrows above point were to apply adhesive. **DO ONE SIDE AT A TIME**. Apply adhesive to the whole area the looks like a C or [. When adhering to card base, leave an even boarder between your card base and the DSP. You will notice when adhering the 2nd side, the DSP will be shorter than your card base. When all adhered, the card will Not open flat!

Inside cut dimensions:

2 large rectangles (book) in center of card: DSP cut 2-3/8 x 3-1/4

2 Very Vanilla centers: 2-1/8 x 3

2 sides to the center "book": DSP cut to 5/8 x 3-1/4

2 long side strips (my example, long blue strips): 7/8 x 5-1/4

4 small rectangles (my example, small blue rectangle pieces): 7/8 x 1-3/8

Other details:

- Inside on Very Vanilla:
 - Die cut 4 swirls from Beautiful World Bundle
 - Globes stamped off in Misty Moonlight ink
 - Words are direct stamp in Misty Moonlight
- Card Front:
 - Die cut globe and globe stand in Gold Foil paper
 - Adhere globe stand
 - Take circle die from Beautiful World Bundle and die cut in Misty Moonlight CS
 - Glue Gold Foil globe to Misty Moonlight CS and then adhere with Dimensionals
 - Words from Tasteful Touches stamp set stamped in Misty Moonlight on Very Vanilla CS that is 1" wide. Punched end with Lovely Labels Pick A Punch
 - Add In-Color Enamel Dot

Lisa Brown, Independent Stampin' Up! Demonstrator

Shop: Stampwithlisabrown.stampinup.net

Facebook: Stamp with Lisa Brown

lbrown140@gmail.com

Blog: www.creativecardcloset.com

YouTube: Lisa Brown Stamp with Lisa Brown